



Simple Management Tool User Manual

OTN Solutions for Metro, Regional & Long-haul



Step one: Install Simple management tool

Double-click Simple management tool.exe or Simple management tool.msi as shown in Fig.1

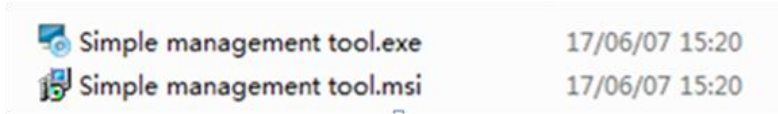


Fig.1

Step two: Double-click Simple management tool shortcut on desktop as shown in Fig.2, popup Simple management tool as shown in Fig.3.



Fig.2

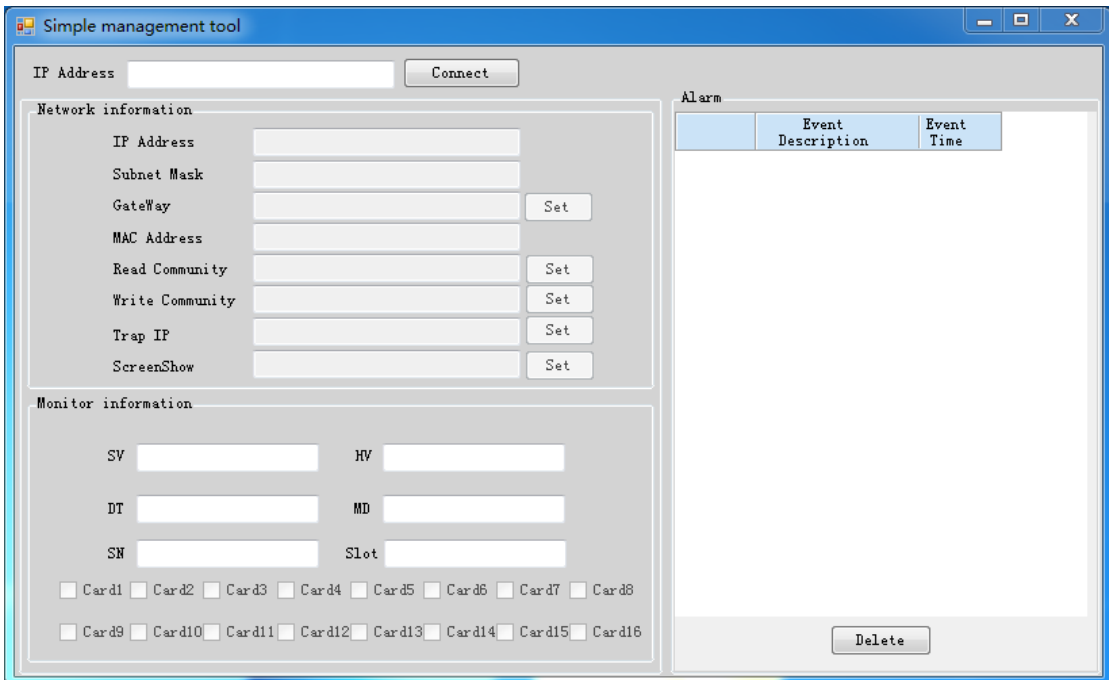


Fig.3

Step three: You can input device IP in IP Address, then click Connect button, if the device is online, then network information and monitor information of the device will be shown, as shown in Fig.4.

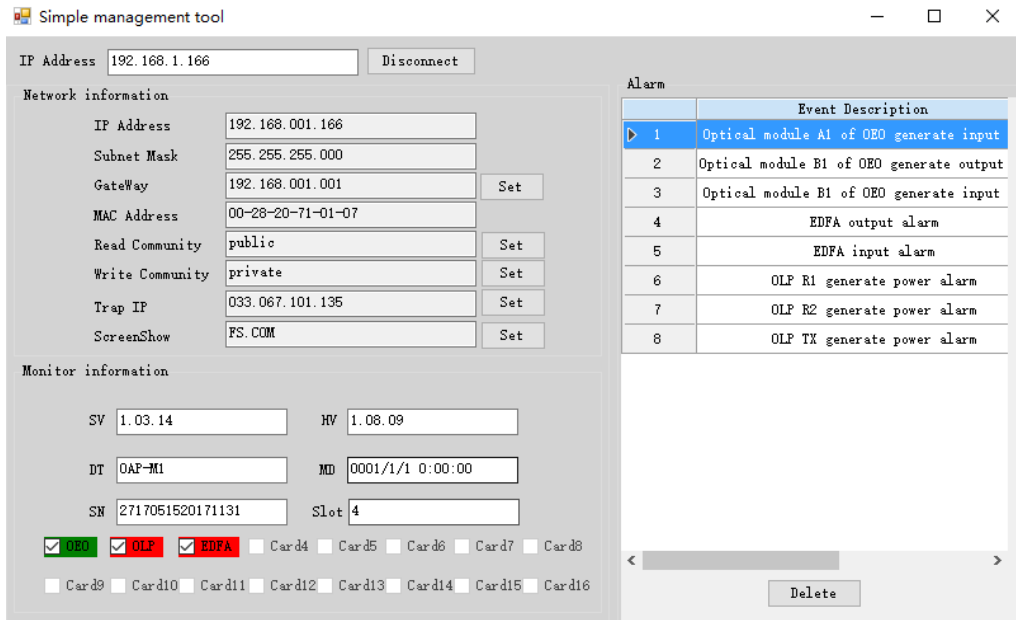


Fig.4

We can see IP Address, Subnet Mask, Gateway, MAC Address, Read Community, Write Community, Trap IP, ScreenShow and Monitor information in Fig.4.

Step four: We can set network information.

How to set IP Address, Subnet Mask and GateWay:

Please click the set button behind of GateWay, fill in new IP Address, Subnet Mask, GateWay of want to change, then click send button, as shown in Fig.5.

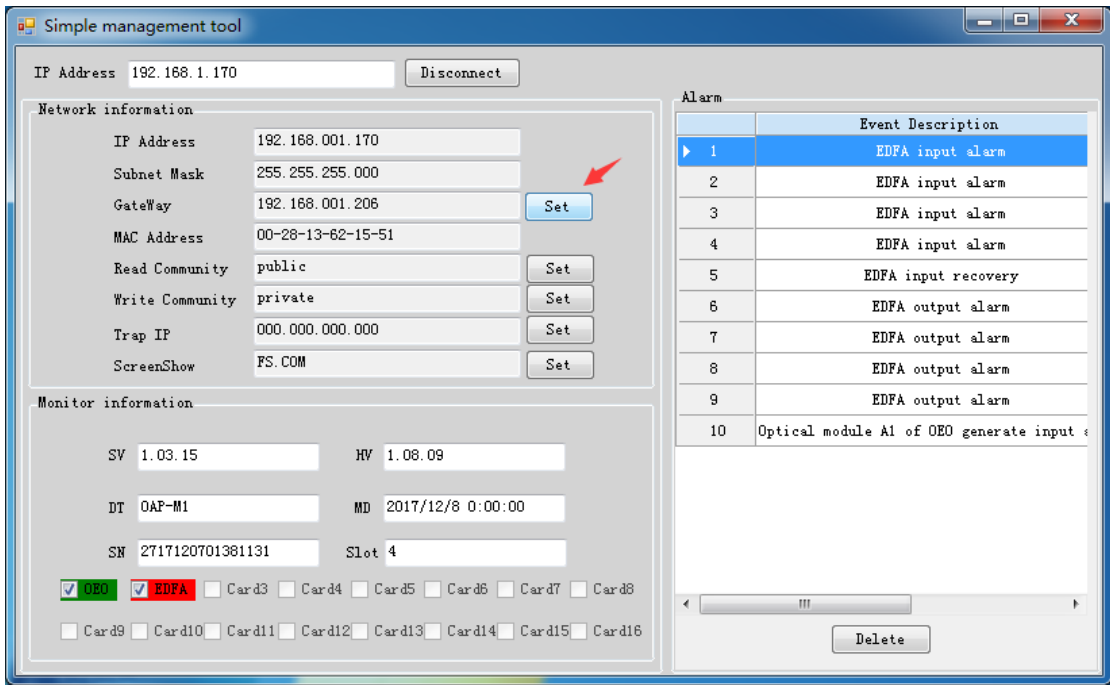


Fig.5.

How to set Read Community:
Please click the set button behind of Read Community, fill in new Read Community of want to change, then click send button, as shown in Fig.6.

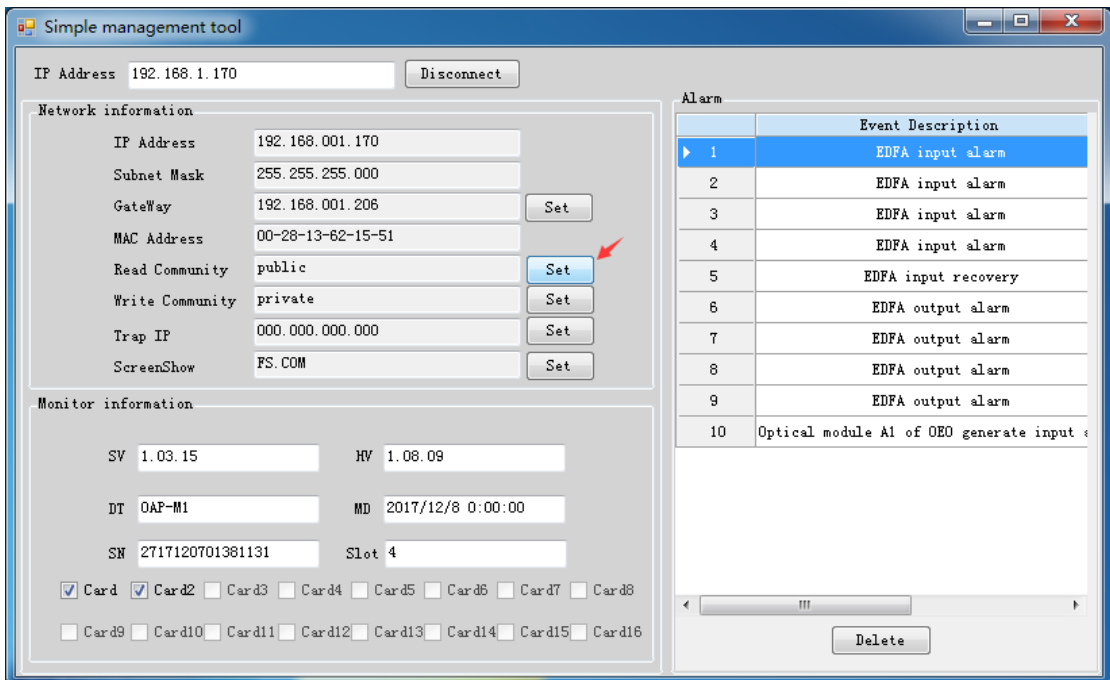


Fig.6

Step five: Double-click OEO card, then we can see monitor information. The below of Fig.7 is monitor card, if a slot has OEO card, then will show “OEO” as shown in Fig.4 (for example, if has OEO card in 3slot, then show “OEO” in Card 3.). Double-click OEO card (as shown in Fig.7), then will show monitor information as shown in Fig.8.

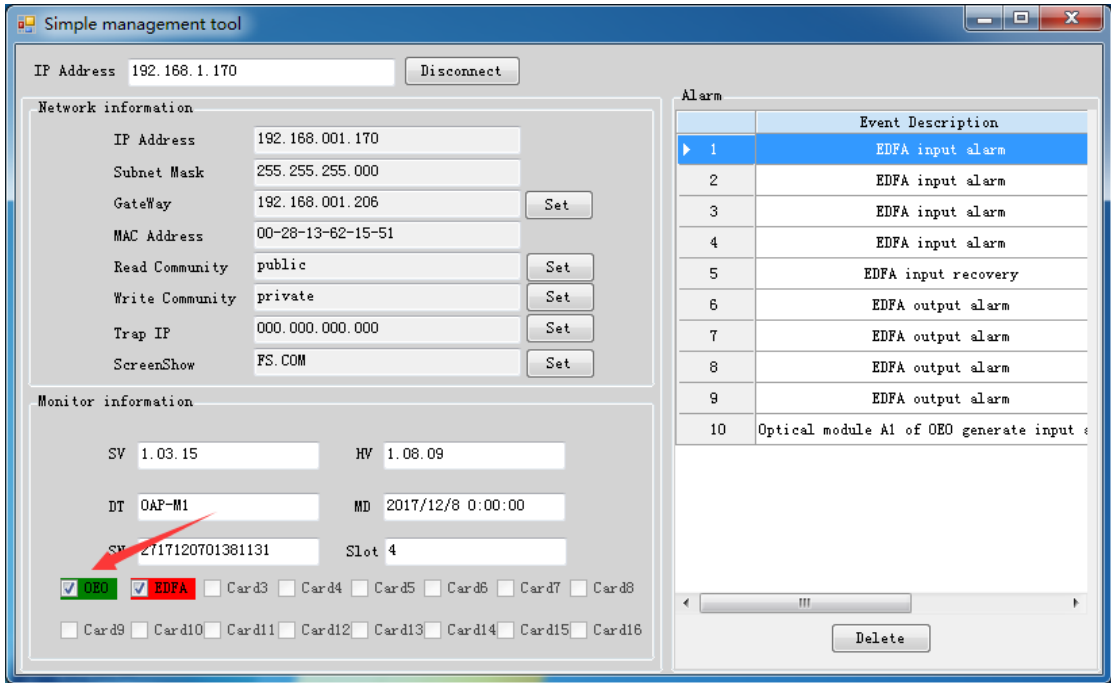


Fig.7

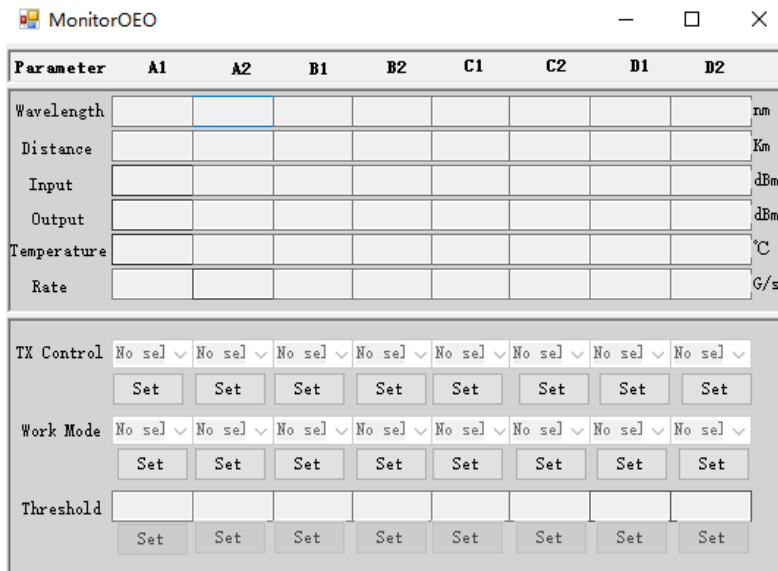
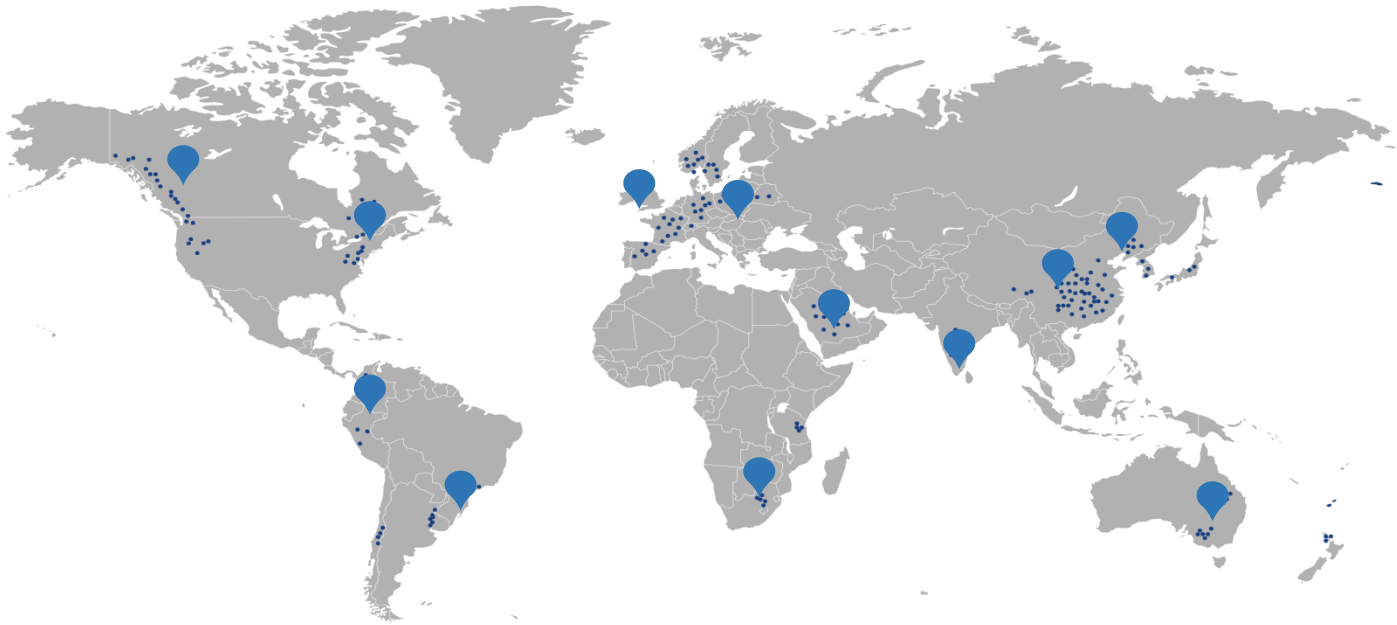


Fig.8

We can optical module information and set TX control, Work Mode.



FS.COM business radiate worldwide, if you need more efficient solutions for Data Center, Optical Transport Network, and Enterprise Network, please contact us at sales@fs.com

For more information visit www.fs.com



FS.COM[®]

DATA CENTER &
CLOUD COMPUTING

All statements, technical information, and recommendations related to the products here are based upon information believed to be reliable or accurate. However, the accuracy or completeness thereof is not guaranteed, and no responsibility is assumed for any inaccuracies. Please contact FS for more information.

Copyright © 2009–2018 FS.COM All Rights Reserved.